



2700 N 4th Ave
Sioux Falls, SD 57104
Ph: 605-334-0173
Fax: 605-334-0102
www.peskaconstruction.com

Now Leasing



Career Ave Retail Mall

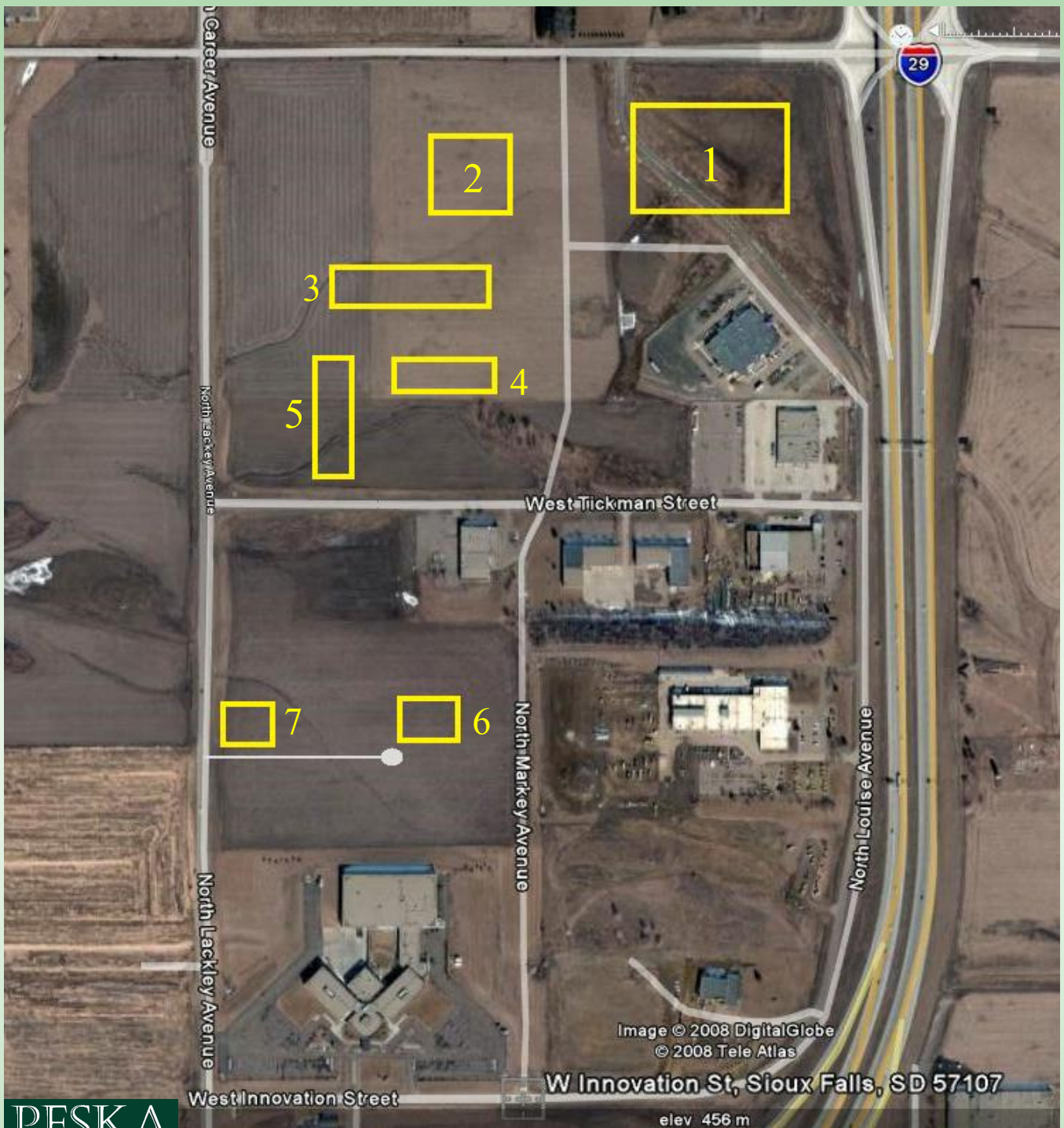
Located at the Northeast corner of Career Avenue and Tickman Street.

FEATURES:

- Located in a Multiple Use Development
- Square feet available: 6,000 per building
- Space divided to 1,500 sq. ft.
- Lease price of \$15.00 per sq. foot, NNN
- Commercial Zoning
- Drive Up Windows Available

Exciting new retail look located in the thriving Northwest side of Sioux Falls.

Located near LodgeNet, University Center, First Premier Bankcard, Southeast Technical University, Midcontinent Communications, National Guard, Chemco, Butler, surrounded by residential area and much more on the way!



PESKA
PROPERTIES

2700 N 4th Ave
Sioux Falls, SD 57104
Ph: 605-334-0173
Fax: 605-334-0102

- 1. First Premier Bankcard**
- 2. Midcontinent Communications**
- 3. Proposed Apartment Complex**
- 4. Proposed Commerce Warehouses**
- 5. Proposed Career Avenue Strip Mall**
- 6. Tri-State Flooring**
- 7. Proposed 30,000 sq. ft. Office Complex**